



赣工机械设备科技(东莞)有限公司
TEL: 15920631511

PART NUMBER: STD133
REVISION: K

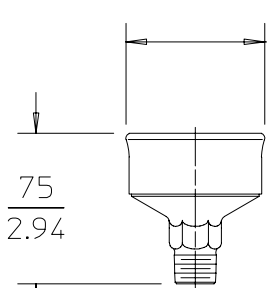
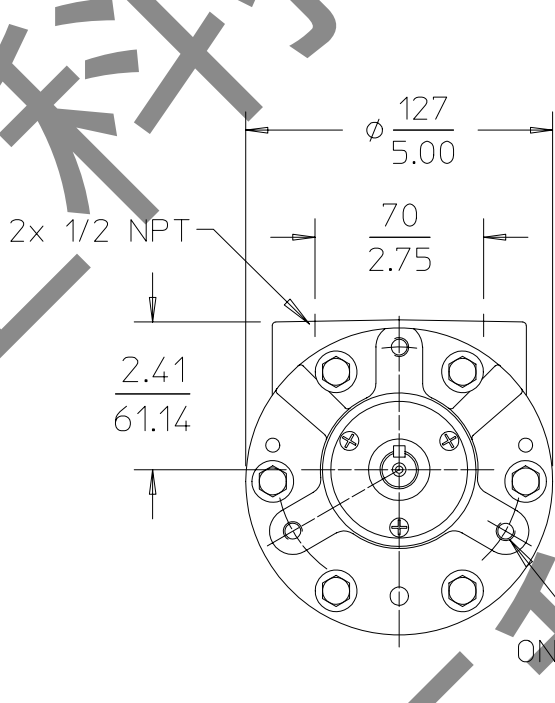
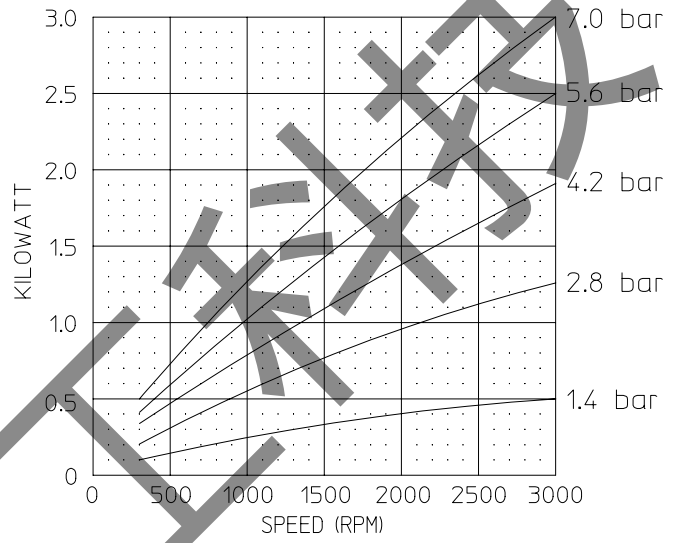
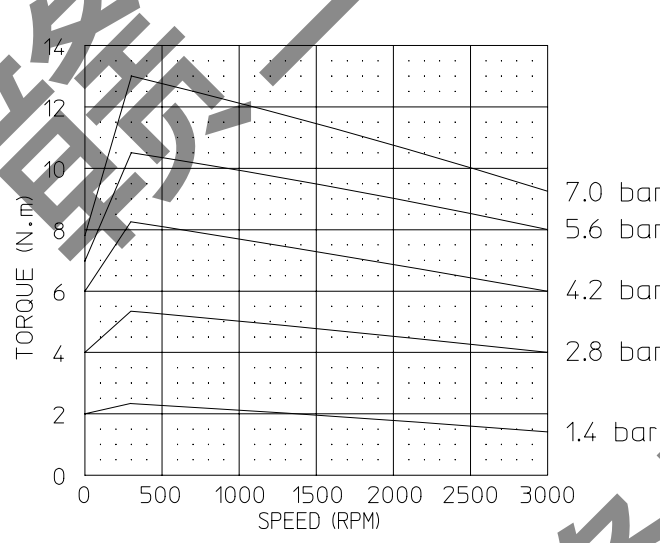
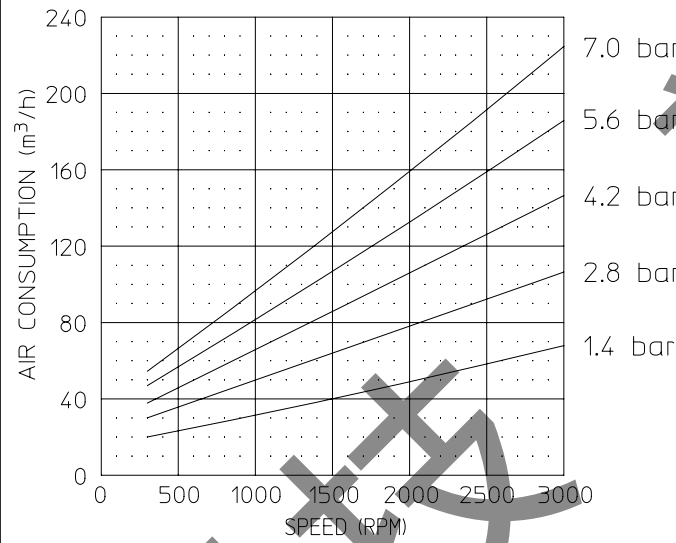
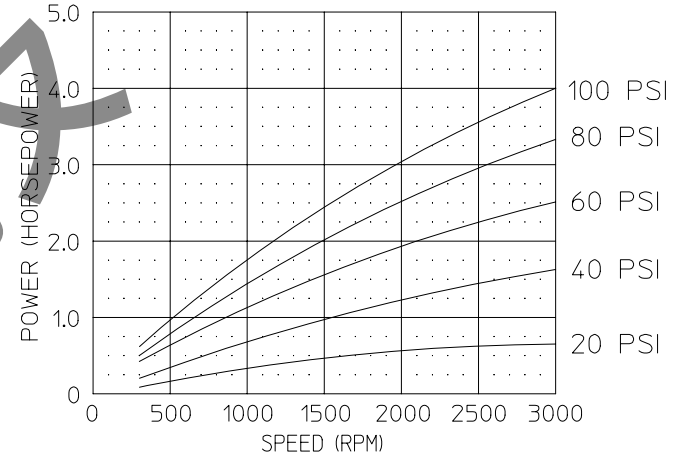
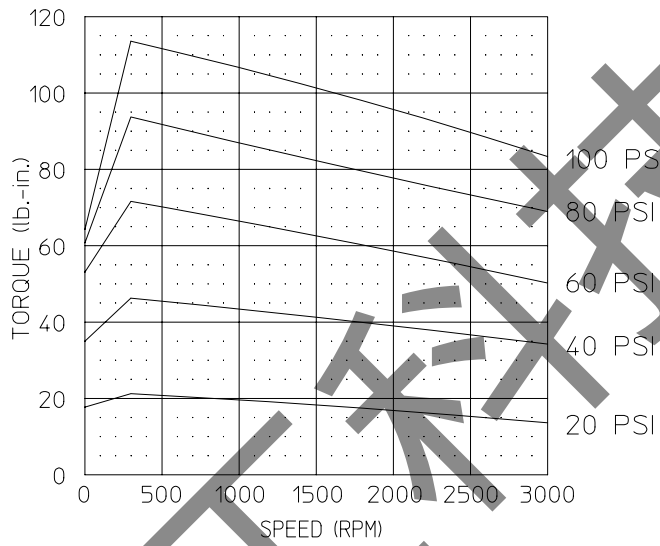
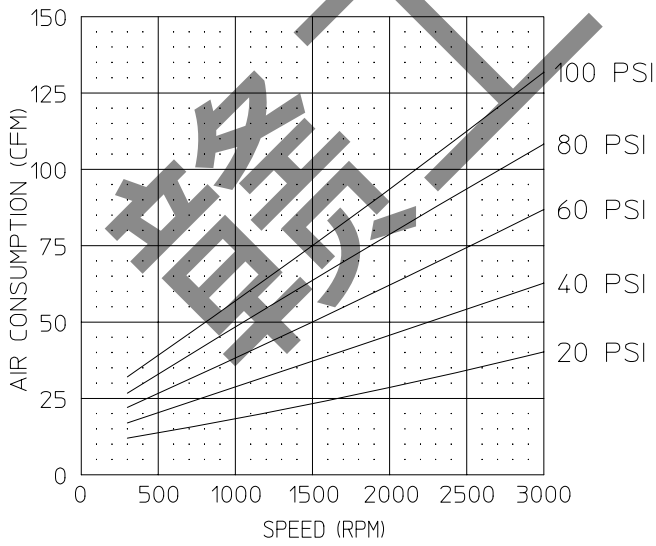
Product Specifications

Model Number	MAX. PRESS.		MAX. SPEED	HP	kW	Net Wt.	
	bar.	PSI				lbs.	kg
6AM-NRV-7A	7.0	100	3,000 RPM	4.0	3.0	21	9.5
*6AM-NRV-7C	7.0	100	3,000 RPM	4.0	3.0	21	9.5
6AM-NRV-7D	7.0	100	3,000 RPM	4.0	3.0	21	9.5
6AM-NRV-7E	7.0	100	3,000 RPM	4.0	3.0	21	9.5
6AM-NRV-29A	7.0	100	3,000 RPM	4.0	3.0	21	9.5

SOUND LEVEL 90 dba MAX.
NORMAL AMBIENT +1°C. - 120°C.
RELATIVE HUMIDITY 0% - 100%
ENVIRONMENT HAZARDOUS AMBIENT COMBUSTIBLE
GAS AND DUST +1°C TO +40°C

CONFORMS TO EUROPEAN STANDARD EN13463-1
NON-ELECTRICAL EQUIPMENT FOR EXPLOSIVE
ATMOSPHERES GROUP II CAT 2 (GAS & DUST),
PROTECTED BY CONSTRUCTION
(SURFACE TEMP. RATED 135°C).

* DENOTES INACTIVE UNITS



MUFFLER ASSEMBLY
SHIPPED UNATTACHED
6AM-NRV-7A AND
6AM-NRV-29A ONLY

3x 5/16-18
ON A 102mm (4.00")
BOLT CIRCLE

